



Attachments for:

Construction machines

Earthmoving machines

Mining machines





BE Complete,
opt for Beco

**The exact
work tools
for your
equipment.**

**Beco has them.
Guaranteed.**

Complete standard product range. Customization if required.

For more than 35 years already, we have been developing and manufacturing a wide range of equipment and work tools, to enable more efficient use of your construction-, earthmoving- and mining equipment. The mix of our client-oriented approach, experienced in-house engineers, and our own production facilities, enables us to always provide what your equipment needs.

Beco is a trustworthy and pleasant partner for:

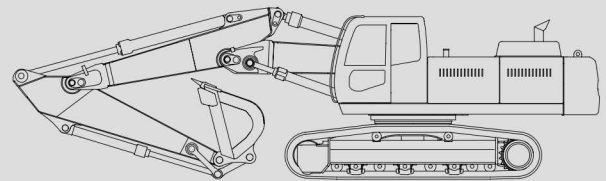
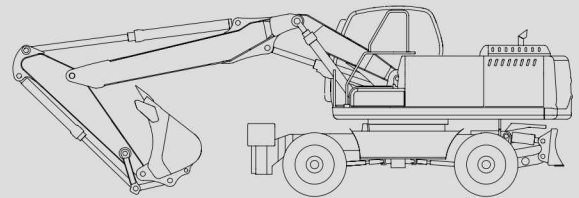
- Sound advice
- A complete range of standard equipment and attachments at competitive prices
- Client-specific customized solutions with a good price-quality ratio

BE Complete: opt for Beco



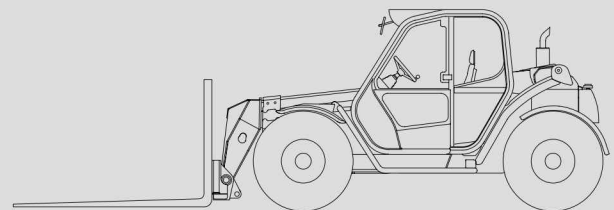
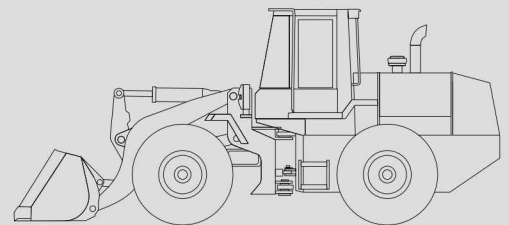
Attachments for excavators

Ditching buckets	4
Backhoe buckets	4
Narrow trenching buckets	4
Tilt buckets	5
Chain buckets	5
Ultra-Heavy-Duty buckets	5
Trapezoidal buckets	6
Skeleton buckets	6
Pallet forks	6
Rippers	7
Jibs	7
Extension arms	7
Demolition- and sorting grabs	8
Quick couplers	8
Tilt connectors	8
Tiltable adaptors	9
Steelwrist tiltrotators & Steelwrist XControl	9
Custom-built	9



Attachments for wheelloaders and telescopic handlers

General purpose buckets	10
Light material buckets	10
Bonus buckets	10
High dump buckets	11
Skeleton buckets	11
Pallet forks	11
Buckets with grapple	12
Skeleton buckets with grapple	12
Silage forks	12
Jibs	13
Quick couplers	13
Custom-built	13



Brick clamp

Brick clamp	14
Beam clamp	14
Custom-built	14

© 2015 BV Beco. All rights reserved.

Designs and technical specifications of the products included in this documentation could be subject to further development and may therefore deviate from the actual properties. Subject to misprints, printing errors and modifications. Supply and delivery in accordance with the terms and conditions of the Metal Workers Union (Metaal unie), filed at the Registry of the District Court of Rotterdam, as set out in the last filed copy.

Ditching buckets

For digging, loading and / or unloading



- Machine operating weight of 1 to 120 tonnes
- Volume of 30 to 10,000 litres
- Width of 500 to 5,000 mm
- All mounting types
- All types of wear parts

Backhoe buckets

For general digging work



- Machine operating weight of 1 to 120 tonnes
- Volume of 30 to 10,000 litres
- Width of 300 to 5,000 mm
- All mounting types
- All types of wear parts

Narrow trenching buckets

For digging of trenches



- Machine operating weight of 1 to 80 tonnes
- Volume of 20 to 3,000 litres
- Width of 220 to 2,000 mm
- All mounting types
- All types of wear parts

Tilt buckets

For digging and / or finishing of slopes



- Machine operating weight of 1 to 80 tonnes
- Volume of 30 to 3,000 litres
- Width of 800 to 3,000 mm
- Tilt cylinders or tilt motor
- All mounting types
- All types of wear parts

Chain buckets

For digging, loading and / or unloading of heavy types of soil



- Machine operating weight of 1 to 80 tonnes
- Volume of 30 to 5,000 litres
- Width of 500 to 3,000 mm
- All mounting types
- All types of wear parts

Ultra-Heavy-Duty buckets

For digging, dredging and / or mining



- Machine operating weight of 30 to 200 tonnes
- Volume of 5 to 25 m³
- Width of 1,500 to 6,000 mm
- All mounting types
- All types of wear parts

Illustrated: volume 22 m³

Trapezoidal buckets

For digging of trenches / ditches



- Machine operating weight of 7 to 40 tonnes
- Width of 400 to 1,000 mm (cutting edge)
- Fixed or adjustable profile blades
- Angle based on client's requirements
- All mounting types
- All types of wear parts

Skeleton buckets

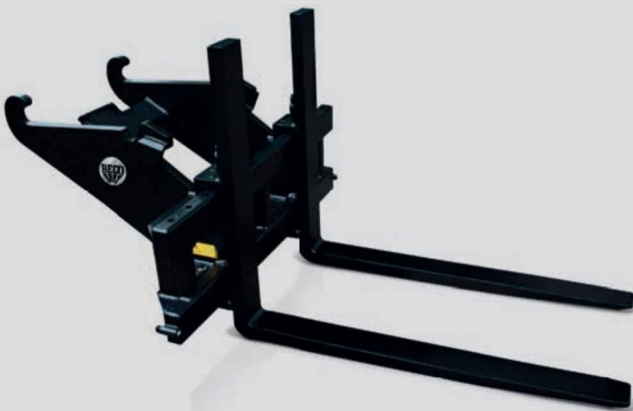
For digging, demolition, breaking and sorting



- Machine operating weight of 1 to 80 tonnes
- Volume of 40 to 4,000 litres
- Width of 400 to 3,000 mm
- Round or square bars
- All mounting types
- All types of wear parts

Pallet forks

For handling materials on pallets



- Machine operating weight of 1 to 40 tonnes
- Load carrier capacity of 1.2 to 12 tonnes
- Fork carrier width of 900 to 2,500 mm
- Fork length of 900 to 2,500 mm
- All mounting types

Rippers

For loosening of soil, rocks, etc.



- Machine operating weight of 3.5 to 120 tonnes
- All mounting types
- All types of wear parts

Jibs

For hoisting of loads and attachments



- Machine operating weight of 3.5 to 40 tonnes
- Length of 1,000 to 5,000 mm
- Lifting capacity of 500 to 15,000 kg
- Fixed or retractable
- All mounting types

Extension arms

For extension of the standard arm



- Machine operating weight of 3.5 to 40 tonnes
- Length of 1,000 to 5,000 mm
- Hydraulic connections for additional functions
- Bucket linkage and bucket cylinder
- All mounting types

Demolition / sorting grabs

For demolition and sorting



- Machine operating weight of 1.2 to 40 tonnes
- Volume of 30 to 1,200 litres
- Width of 300 to 1,200 mm
- With or without hydraulic rotor
- Bars, perforated or closed shelves
- Exchangeable bolt-on cutting edges

Quick couplers

For quick coupling of attachments



- Machine operating weight of 1 to 90 tonnes
- Load hook of 2 to 25 tonnes
- All mounting types
- Hydraulic or mechanical operation

Tiltable connectors

For quick coupling of attachments combined with tilt function



- Machine operating weight of 3.5 to 40 tonnes
- Tilt cylinders or tilt motor
- Tilt angle up to 50°
- All mounting types

Tiltable adaptors

For tilting of attachments with quick coupling function



- Machine weight of 3.5 to 40 tonnes
- Tilt cylinders or tilt motor
- Tilt angle up to 50°
- All mounting types

Steelwrist tiltrotators & Steelwrist XControl

For rotating and tilting of attachments & operation of tiltrotators



- 360° continuous rotation
- Machine weight of 2 to 33 tonnes
- 45° tilt angle
- All mounting types
- CW or symmetrical quick coupling
- XControl operation for all types of excavators
- With auto-tuning, clinometer and pre-sets

Officieel Steelwrist Service Partner

Custom-built

For specific client requirements and applications



- Personal customized advice
- In-house engineering
- More than 35 years of experience
- Maximum flexibility
- Fast delivery

General purpose buckets

For handling, levelling and breaking of soil, sand, rubble, green waste or bulk materials



- Machine weight of 1 to 60 tonnes
- Volume of 250 to 25,000 litres
- Width of 800 to 5,000 mm
- All mounting types
- All types of wear parts

Light material buckets

For handling of light materials



- Machine operating weight of 1 to 60 tonnes
- Volume of 350 to 35,000 litres
- Width of 800 to 5,000 mm
- All mounting types
- All types of wear parts

Bonus buckets

For handling of (bulk) materials



- Machine operating weight of 15 to 60 tonnes
- Volume of 5,000 to 35,000 litres
- Width of 2,500 to 5,000 mm
- All mounting types
- All types of wear parts

High tipping buckets

For handling of bulk materials



- Machine operating weight of 6 to 30 tonnes
- Volume of 500 to 20,000 litres
- Width of 700 to 4,000 mm
- Two double-action cylinders with damping
- All mounting types
- All types of wear parts

Skeleton buckets

For handling, levelling, screening and breaking of soil, rubble and paving materials



- Machine operating weight of 1 to 60 tonnes
- Volume of 250 to 25,000 litres
- Width of 700 to 5,000 mm
- Round or square bars
- All mounting types
- All types of wear parts

Pallet forks

For handling of materials on pallets



- Machine operating weight of 1 to 60 tonnes
- Load-carrier capacity of 1.2 to 30 tonnes
- Fork carrier width of 1,000 to 3,000 mm
- Fork length of 900 to 2,500 mm
- All mounting types

Buckets with grapple

For handling of green waste, manure or wood



- Machine operating weight of 1 to 40 tonnes
- Volume of 500 to 10,000 litres
- Width of 800 to 4,000 mm
- All mounting types
- All types of wear parts

Skeleton buckets with grapple

For handling and sorting of green waste, manure or wood



- Machine operating weight of 1 to 40 tonnes
- Volume of 500 to 10,000 litres
- Width of 800 to 4,000 mm
- All mounting types
- All types of wear parts

Silage forks

For levelling out grass or forage maize on silage piles



- Machine operating weight of 6 to 34 tonnes
- Width of 2,500 to 4,300 mm
- Hydraulically retractable
- Square heavy-duty teeth
- Maize plates
- Transportation protection guard
- All mounting types

Jibs

For hoisting of loads and stone clamps



- Machine operating weight of 1 to 40 tonnes
- Length of 500 to 5,000 mm
- Lifting capacity of 250 to 20,000 kg
- Fixed, mechanically or hydraulically retractable
- Fixed or hydraulically pivotable
- All mounting types

Quick couplers

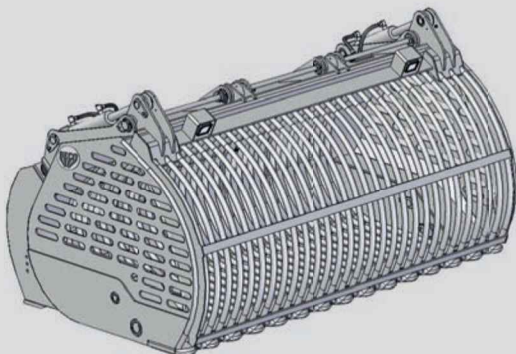
For quick coupling of attachments



- Machine operating weight of 1 to 40 tonnes
- All mounting types
- Hydraulic or mechanical operation

Custom-built

For specific client requirements and applications



- Personal customized advice
- In-house engineering
- More than 35 years of experience
- Maximum flexibility
- Fast delivery

Brick clamp

For loading, unloading and relocation of stones and bricks



- Package height of 300 to 1,000 mm
- Package width of 520 to 1,130 mm
- Clamp beam length of 1,250 to 1,750 mm
- Lifting capacity of 750 to 2,500 kg
- Mounting with swivel or hydraulic 360° rotator continuous
- Mountable to excavator, wheel loader, (mobile) crane or fork-lift truck

Beam clamp

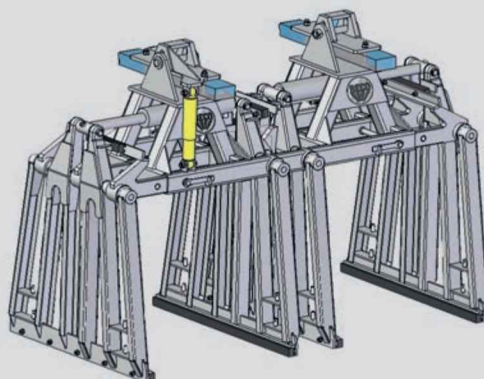
For lifting of concrete beams



- Maximum load height of 550 mm
- Package width of 80 to 750 mm
- Clamp beam length of 400 mm
- Maximum lifting capacity of 500 kg
- Mountable to excavator, wheel loader or (mobile) crane

Custom-built

For specific client requirements and applications



- Personal customized advice
- In-house engineering
- More than 35 years of experience
- Maximum flexibility
- Fast delivery



Therefore Beco

When we put
our name to
something, you
can be sure of:

- ✓ A brand-independent specialist
- ✓ Standard and customized solutions
- ✓ Top quality equipment
- ✓ Competitive prices
- ✓ Flexible design and manufacturing
- ✓ Repair, Overhaul & Service
- ✓ Fast delivery





Smart. Solid.

BECO | TRANSPORT

Tipper trailers and hooklift carriers
for agricultural, earthmoving,
landscaping and industry.

BECO | ATTACHMENTS

Equipment and attachments for excavators,
wheel loaders and cranes.

BECO | MODIFICATIONS

Modifications and components
for excavators, wheel loaders,
dump trailers and construction machines.

BECO | GRABS

Grabs for material handling, contractor,
waste processing, dredging,
recycling and industry.

BECO | STEEL STRUCTURES

Customized steel structures for onshore,
offshore and industry.

BV BECO

De Limiet 18

T: +31 (0) 347 - 323100

4131 NR Vianen (Ut.)

F: +31 (0) 347 - 377780

The Netherlands

E: info@beco-vianen.com

www.beco-vianen.com

www.facebook.com/beco.vianen